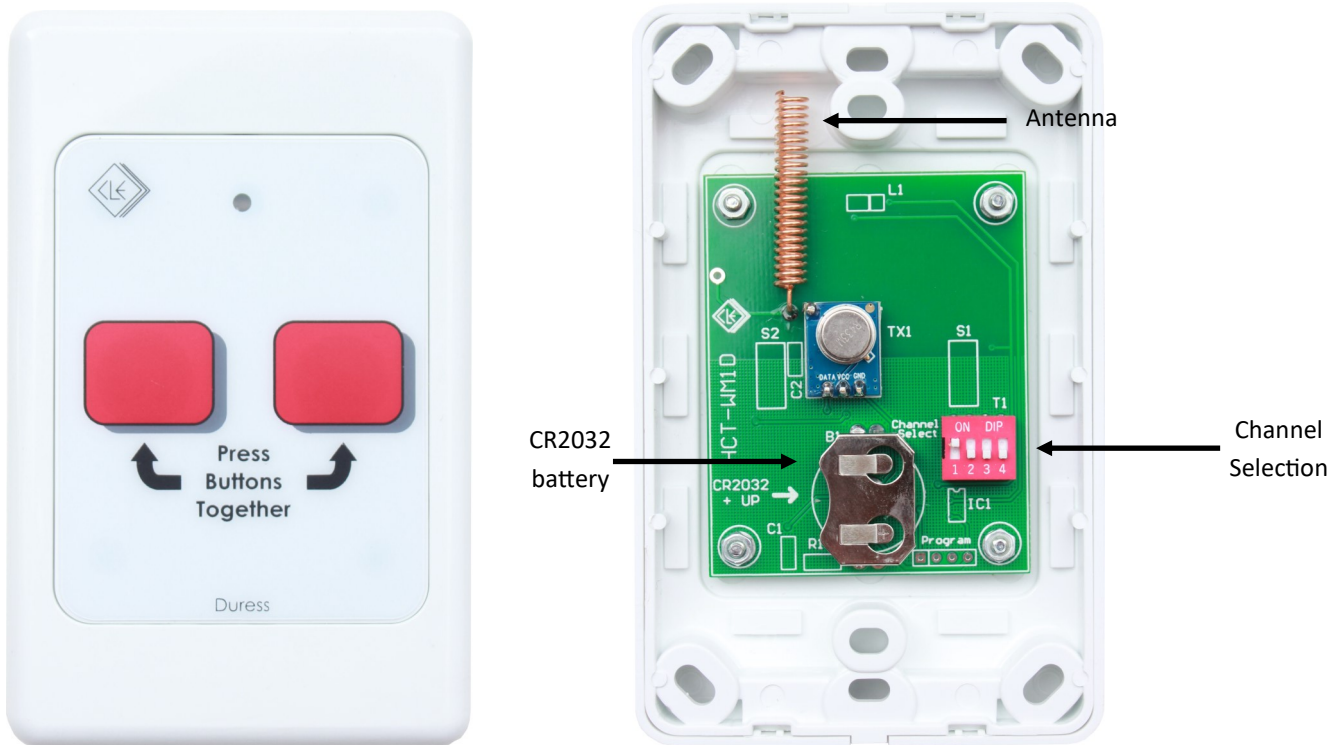


HCT-WM1D

1 CHANNEL WALL MOUNT PANIC/DURESS TRANSMITTER

This product is a wall mounted 433.92Mhz transmitter which is fully compatible with the Circuit Level range of receivers, excluding WE800EV2 and RE005EV2. This transmitter requires both buttons to be pressed to transmit a signal. The supplied battery will with moderate use last in excess of 2 Years. This version can transmit **any of 6 channels** by DIP switch selection. For CH1 to 4 set the numbered DIP switch ON. For CH5 set 1+2 ON. For CH6 set 3+4 ON. As with all RF products avoid mounting the wall plate on a metal surface as this will severely effect the performance of the product. It is best to test the mounting location before permanently fixing into position. **As this product is designed to be used to report emergency situations regular testing is recommended.**



Specifications:

Operating Voltage	3VDC	Standby Current	0 mA
Battery Type	CR2032 Lithium	Transmit Current	11 mA
RF Frequency	433.92Mhz (+/- 75Khz)	Encryption	Keeloq™ Rolling Code
Transmit Indicator	Red LED	Coding Combinations	4.2 billion

Warranty

This product is guaranteed for a period of **2 YEARS** from date of sale. For a full warranty statement please contact your supplier or Circuit Level Electronics.



Designed & Manufactured in Australia by CIRCUIT LEVEL ELECTRONICS (Aust) Pty Ltd ABN 51 074 517 570

Information and specifications detailed in this document are subject to change without notice in the interest of product development.

